

Fond du Lac County

...for my club,

my community,

my country, and my world

2020-2021 ENROLLMENT BOOKLET AND PROJECT GUIDE



Extension
UNIVERSITY OF WISCONSIN-MADISON
FOND DU LAC COUNTY

Room 227 Administration/Extension Bldg.
400 University Dr
Fond du Lac, WI 54935
(920) 929-3170



Extension

UNIVERSITY OF WISCONSIN-MADISON
FOND DU LAC COUNTY

4-H Program Coordinator
Tracy Keifenheim

Extension Fond du Lac County
Room 227 Administration/Extension Bldg.
400 University Dr.
Fond du Lac, WI 54935

Phone: 920-929-3170
Fax #: 920-929-3181

Website: <https://fonddulac.extension.wisc.edu/4h/>
Facebook: [Fond du Lac County 4-H](#)

Area Extension Director - *Cindy Sarkady*
4-H Program Coordinator - *Tracy Keifenheim*
Fond du Lac/Washington County Positive Youth Development Educator - *Ron Jakubisin*
Community Garden Coordinator - *Patty Percy*
Community Resource Development Educator - *Diana Hammer*
Fond du Lac/Dodge County Area Soil Health Outreach Specialist - *Vacant*
Dairy & Livestock Agent - *Tina Kohlman*

Human Development & Relationship Educator - *Vacant*
FoodWise Nutrition Educator - *Pamela Nelson*
FoodWise Nutrition Educator - *Melanie Phillips*
FoodWise Coordinator/Health & Well-Being Educator - *Amanda Miller*
Program Assistants - *Pam Bartoli, Tina Engelhardt, Katie Gindt, and Cassi Worster*



Extension

UNIVERSITY OF WISCONSIN-MADISON
FOND DU LAC COUNTY

Extension Fond du Lac County
Room 227 Administration/Extension Bldg
400 University Drive
Fond du Lac, WI 54935
902-929-3170

Dear Fond du Lac County 4-H Family:

First of all, thanks for your interest in the Fond du Lac County 4-H program! In 4-H, young people share, grow, and learn together from various projects, events, and activities in various situations under the guidance of their families and other volunteer adult leaders. Regardless of the structure, 4-H members have fun learning, working, and succeeding together in the home, neighborhood, and community.

Most 4-H members join one of our local 4-H clubs. Clubs typically hold monthly meetings plus many other events throughout the year including: parties, picnics, outings, community service opportunities, and much more! Members interested in being more involved can become club officers where they have the responsibility of planning events and programs. In addition to club meetings, 4-H members can also enroll in a variety of projects. Projects include art, horse, fishing, foods, photography, robotics, woodworking, and many others. Projects are led at the club level, countywide level, or through independent study.

The 4-H Slogan, "Learning by Doing," illustrates the fact that 4-H focuses on teaching life skills through hands-on experiences and activities. These skills include the tangible, such as sewing, cake decorating, fishing, dog obedience, or raising a beef steer, which members learn through project work. Life skills, however, also encompass the more abstract abilities such as leadership, communication, teamwork, and cooperation. Members learn these through participation in their club, with project teams, or through county, state, national, or even international opportunities.

We look forward to working with you!

Tracy Keifenheim

Table of Contents

Welcome Letter pg. 3

Table of Contents pg. 4

What is 4-H? pg. 5

4-H Emblems and Symbols pg. 6

**4-H Clubs in Fond du Lac County
pg. 7**

4-H Events pg. 8

4-H Awards and Opportunities pg. 9

4-H Educational Programs pg. 10

Who's Who in 4-H? pg. 11

4-H Terms pg. 12

4-H Policies pg. 13

**What is the Discretionary Fund?
pg. 13**

**Introduction to 4-H, WI 4-H
Movement, & Project vs. Exhibit
pg. 14**

Younger Members pg. 15
Cloverbuds
Exploring

Community Involvement pg. 15
Service Learning
Citizenship
Self-Determined
International Programs

Animal Sciences pg. 15-17
Beef
Cats
Dairy
Dairy Management
Dogs
Goats (Dairy, Meat, & Pygmy)
Horse (Horse, Horseless
horse, Model Horse)
Llamas
Pets
Poultry (Poultry, Waterfowl,
Turkeys, Bantams, Pigeons)
Rabbits (Rabbits, Rabbit
Hopping)
Sheep
Swine
Veterinary Science

Arts & Communication pg. 18-19

Art
Books On The Move
Ceramics
Clowning
Communications
Computers
Creative Writing
Dance
Drawing & Painting
Folk Arts
Latino Cultural Arts
Leathercraft
Music
Photography
Posters
Speaking
Theatre Arts
Videography

Family, Home & Health pg. 19-20

Child Development
Clothing
Consumer Savvy
Crocheting
Entrepreneurship
Foods & Nutrition
Foods Preservation
Health
Home Environment
Intergenerational
Programs
Knitting
Personal Finance
Quilting
Workforce Readiness

**Mechanical Sciences & STEM
pg. 20-21**

Aerospace
Bicycling
Electricity
Geospatial
Robotics
Scale Models
Small Engines
Tractors
Woodworking

Natural Sciences pg. 21-23

Adventures
Backpacking & Hiking
Bicycling
Canoeing
Entomology
Exploring Your
Environment
Fishing
Forestry
Recycling
Science Discovery
Shooting Sports (Archery, Air
Pistol, Rifle, Hunting, Shot
Gun, Muzzleloading)
Water
Wildflowers

Plant & Soil Sciences pg. 23

Crops
Flowers
Fruits
Home Grounds
House Plants
Plant Crafts
Vegetables

Friends of FdL County 4-H pg. 24

**Contacting the Extension Office
pg. 25**

The Wisconsin 4-H Movement pg. 26

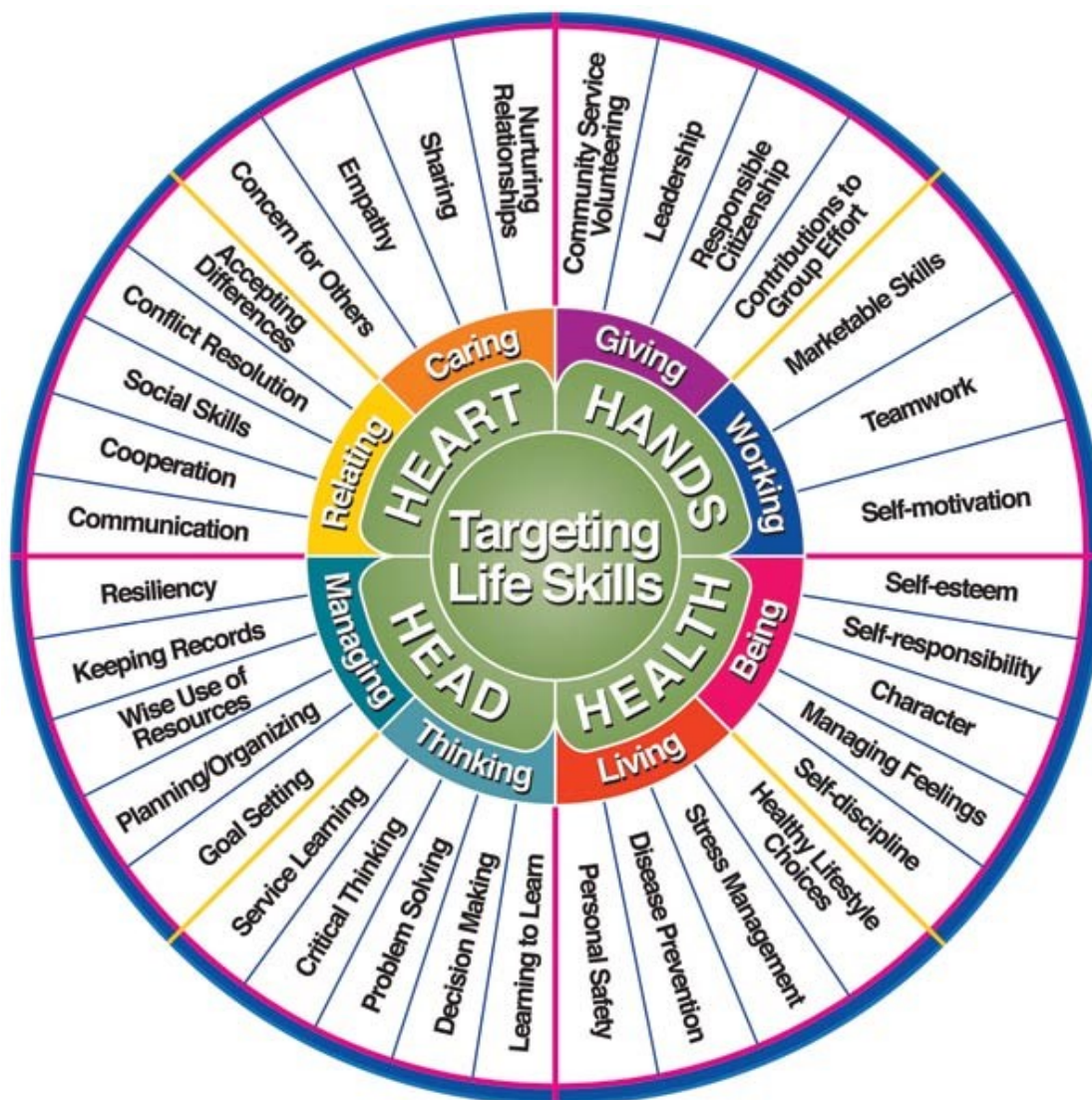
What is 4-H?

4-H is a positive youth development organization that empowers young people to reach their full potential. A vast community of more than 6 million youth and adults working together for positive change, 4-H enables America's youth to emerge as leaders through hands-on learning, research-based 4-H youth programs and adult mentorship, in order to give back to their local communities.

4-H prepares young people to step up to the challenges in their community and the world. Using research-based programming around positive youth development, 4-H youth get the hands-on real world experience they need to become leaders. Young people who are a part of 4-H have the opportunity to explore all types of science, health, and citizenship programming delivered through 4-H clubs, projects, camps, as well as state and national 4-H opportunities.

The 4-H Youth Development Program is the youth outreach program from the land-grant institutions' cooperative extension services and the U.S. Department of Agriculture. 4-H serves as a model program for the practice of positive youth development by creating positive learning experiences; positive relationships for and between youth and adults; positive, safe environments; and opportunities for positive risk taking.

In a safe and enriching environment, 4-H brings youth and adults together to learn life skills through participation in a variety of non-formal educational experiences. 4-H uses a framework based upon the 4-H Pledge to organize the delivery of experiences that support the growth and development of youth. 4-H refers to this framework as a "Targeting Life Skills Model" (Hendricks, 1998).



4-H Emblems & Symbols

Emblem:

The national 4-H emblem is a four-leaf clover with the letter "H" on each leaf.



The Four H's:

The four H's stand for Head, Heart, Hands, and Health. These four H's represent the four-fold training and development in which members participate. This meaning of the four H's is clearly given in the pledge below.

4-H Colors:

Green and white are the 4-H colors. The white in the 4-H flag symbolizes purity. The green, nature's most common color, represents life, growth, and youth.

Pledge:

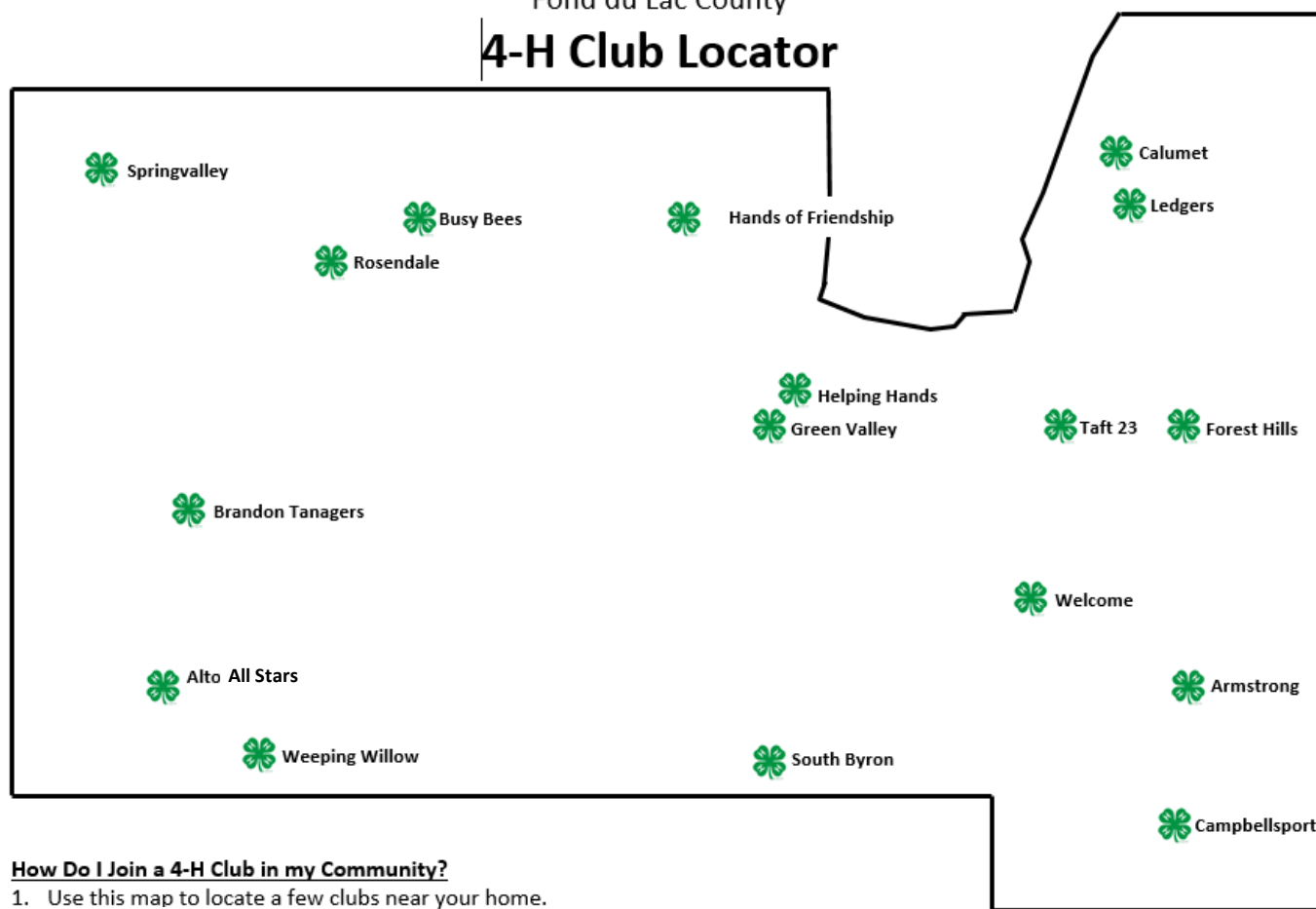
I pledge
...My Head to clearer thinking
...My Heart to greater loyalty
...My Hands to larger service, and
...My Health to better living, for my club,
my community, my country, and my world.

Slogan: "Learning By Doing"

Motto: "To Make the Best Better."

Fond du Lac County 4-H

Fond du Lac County 4-H Club Locator



How Do I Join a 4-H Club in my Community?

1. Use this map to locate a few clubs near your home.
2. There are 17 4-H clubs in the Fond du Lac County.
3. Contact the General Leader of the club(s) to learn about the activities and "personality" of each club.
4. Attend one of the 4-H meetings, functions, or activities to determine which club is the right fit for you!
5. Call the Extension office at (920)929-3170 if you need assistance or have general questions.

4-H Club	Location	Meeting Date	Contact Person	Phone # or Email
Alto All Stars	Alto Community Center <i>Alto</i>	3rd Tuesday 7:00 p.m.	Yvonne Greenfield Jennifer Greenfield	920-979-8598 ylgreenfield8598@gmail.com jgreenfield8597@gmail.com
Armstrong	Osceola Town Hall <i>Waucousta</i>	2nd Sunday 6:00 p.m.	Karen Albert	920-539-2519
Brandon Tanagers	Brandon School <i>Brandon</i>	2nd Monday 6:30 p.m.	Cindy Bailey Sue Bruins	920-346-5868 920-602-3466
Busy Bees	Eldorado Community Hall <i>Eldorado</i>	1st Monday 6:30 p.m.	Deb Mess	920-904-2782 justrmess@yahoo.com
Calumet	Marytown Athletic Center <i>Marytown</i>	2nd Tuesday 7:00 p.m.	Linda Sattler	920-948-4005
Campbellsport	Campbellsport Elementary School <i>Campbellsport</i>	2nd Wednesday 7:00 p.m.	Karlene Krueger Jessica Jordan	920-517-0782 920-533-5438 campbellsport4h@gmail.com
Forest Hills	Forest Town Hall <i>Dotyville</i>	2nd Tuesday 7:00 p.m.	Marlene Roltgen Janice Vollmer Dawn Doll	920-923-4032 920-923-5121 920-921-4565
Green Valley	Rolling Meadows Meeting Room <i>Fond du Lac</i>	2nd Monday 7:00 p.m.	Elsie Kottke Fran Trewin	920-922-0914 920-583-4308
Hands of Friendship	Friendship Town Hall <i>Van Dyne</i>	2nd Monday 7:00 p.m.	Tami Averbeck Terra Mueller	920-688-2863 920-602-4087
Helping Hands	Ascension Lutheran Church <i>Fond du Lac</i>	2nd Sunday 3:00-5:00 p.m.	Lori Quackenboss	920-517-8172 quackenboss@sbcglobal.net
Ledgers	Holy Family St. Peter Church Hall <i>Malone</i>	2nd Monday 7:00 p.m.	Judy Bertram	920-922-9379 mandjbertram@gmail.com
Rosendale	Peace Lutheran Church <i>Rosendale</i>	1st or 2nd Sunday Usually 1:00 p.m.	Tina Hansen	920-979-3546
South Byron	Library <i>Lomira</i>	1st Monday 6:30 p.m.	Vicki Thomas Amy Johnson	920-517-3362 920-960-1346
Springvalley	Grace Lutheran Church <i>Ripon</i>	1st Tuesday 6:00 p.m.	Crystal Meyer Sara Retelle	920-373-1240 920-279-2103
Taft 23	Empire Town Hall <i>Fond du Lac</i>	2nd Tuesday 7:30 p.m.	Traci Hankwitz	920-904-2281
Weeping Willow	Various Waupun Area Locations <i>Waupun</i>	2nd or 3rd Saturday 1:00 p.m or 7:00 p.m.	Nan Jean Kiesow Michelle Ludtke	920-346-5357 920-517-8508
Welcome	Eden Community Center <i>Eden</i>	3rd Monday 6:30 p.m.	Cindy Koffman	920-477-5006 cindy@koffman.org

4-H Events

Each club has special activities throughout the year. In addition, there are countywide activities and events that 4-H members may participate in. The listing below is only a partial listing. Many other project-related activities and events are held annually. All events are listed in the 4-H Family Times Newsletter or the 4-H Friday electronic mailing or can also be found at: <https://fonddulac.extension.wisc.edu/events-activities/>.

National 4-H Week - A week in October is set aside each year to recognize and promote 4-H across the country. Each year a theme highlights the week. Many of the clubs will have window displays or some special promotion of 4-H in their community. Clubs, leaders and members use this time to recruit members for the coming year. (First full week in October.)

Cloverbud Pumpkin Contest - It is a fun filled day for all Cloverbuds. Everyone can enter their pumpkin in categories such as: most unusual shape, largest, smallest, etc. They can also be creative and enter in the painted categories: scariest funniest, most colorful, etc. Many opportunities to win and interact with other Cloverbuds across the county.

Fall Forum - Fall Forum, held in November, is an opportunity for youth and adult leaders to attend the statewide training weekend with county and state staff. It is planned by a team of youth and adult volunteers from WI 4-H Leader Council with the support of county and state staff. We hope you will promote it to youth and adult leaders in our county!

Officer Workshop - All officers are invited to participate in the annual training. Participants will learn the responsibilities of the officer positions. Participants will also meet other 4-H members from throughout the county, and this will give them a chance to exchange ideas and build new relationships. Free pizza and soda will follow the workshop!

Family Learning Day - With over 200 attendees, the annual 4-H Family Learning Day is one of the most exciting local events of the year usually held in February. This year projects kits are being put together to be distributed to youth, as Family Learning Day is not being held in person. 4-H and other community youth are able to select project kits to learn a new skill or to gain fresh ideas. There are a variety of sessions: sewing, cooking, arts and crafts, woodworking, etc.



Creative Arts Festival - This annual event is usually held at UWO-Fond du Lac's Prairie Theater. It is open to all 4-H club members to share their creative talents individually or as part of a group. Entry areas include drama, novelty acts, vocal, instrumental, dance performances, photography, art, speeches, and poetry. The show is planned and conducted by a countywide committee. This year a Virtual Visual Arts Festival is being offered. It is open to youth in 3rd-13th grade in Fond du Lac, Ozaukee, or Fond du Lac County.

Super Craft Saturday - Usually in April, there has been Super Craft Saturday! This event has been open to 4-Hers of all ages and other youth. It gives you the opportunity to try your hand at a variety of craft projects ranging in size from small to large.

Small Animal Fun Day - all youth in the Poultry, Rabbit, and Cavy (guinea pig) projects are invited to attend the Small Animal Fun Day. There are showing and showmanship workshops, trophies, ribbons, a HUGE raffle, and prizes will be awarded for winners of our contests. This event takes place at the Fond du Lac County Fairgrounds Cow Palace in May.

Fashion Revue - All 4-H members in the clothing, crocheting, knitting, Cloverbud, and Exploring projects are invited to participate in the Fashion Revue. This event is eligible for Fond du Lac County fair premiums and ribbons. Participants are graded on the garment itself, their creativity in the project, and the overall appearance of the garment on the model.

Foods Revue - All members enrolled in the Foods and Nutrition project or the Cloverbud project can participate in the Foods Revue. You will make a food item. Use the ingredient theme selected by the committee. You will set one place setting, to include a recipe card for the item made, placemat or tablecloth, and centerpiece. Awards to be given for each age group and each category and it is eligible for a fair premium.

4-H Summer Camp - Experience 4-H Camp! 4-H members participate in an experience that includes campfires, swimming, canoeing, arts & crafts, games, friends, a talent show and more! All 4-H members between the ages of 9-15 are invited to participate and encourage to bring a friend.

Cloverbud Day Camp - Children from kindergarten to 3rd grade are invited to a fun-filled day at the Gottfried Prairie & Arboretum. Activities include: nature, crafts, games, lunch, and more!

4-H Awards

4-H awards are one way to recognize members, volunteers, and clubs for the outstanding work they do in their club, community, country, and world. Youth can find more information on Awards and Scholarships at the county website: <https://fonddulac.extension.wisc.edu/4h/awards-scholarships/>

Citizenship Award

Recipients have contributed back to 4-H at several levels such as: project, club, county, district, state, or beyond. They will also have high participation, strong achievement, and various leadership and community service roles.

- Completed at least grade 11
- Two recipients from Fond du Lac County

Community Service Award

Service to the community is a fundamental principle of 4-H because involvement in service helps shape lifelong values. Members are eligible to receive this award.

- Two members in grades 5-8
- Two members in grades 9-13

Growth Achievement Award

Recipients have shown accomplishments in 4-H overall for an extended period of time. They show a positive attitude, involvement, growth, breadth and depth in projects, and in activities on the club and county level.

- Completed at least grade 9
- Maximum of 10 recipients from Fond du Lac County

Leadership Award

Recipients display outstanding work as a youth leader on the club and county level, with emphasis on leadership, teaching, and sharing knowledge.

- Completed at least grade 9
- Maximum of 10 recipients from Fond du Lac County

Officer Awards

Officer awards are determined based on the based on the Officer Record Books, which are due to the UW-Extension office at the same time as member record books. Officer Record Book forms and award information can be found on the [Club Leadership Page](#). The following positions are eligible for officer awards:

- Secretary
- Treasurer
- Reporter or Historian

4-H Key Award

The 4-H Key Award is the highest award available to members in 4-H. The Wisconsin 4-H Key Award Program recognizes a select group of 4-H participants who have demonstrated consistent growth in their 4-H involvement, developed and applied their leadership skills and actively participated in the functions of their 4-H club and community.

Project Awards

A 4-H member is given a project award for excellent work in a specific project. Members who are successful in two or more related projects are eligible for additional recognition and might receive an agriculture, arts & communication, home & family, mechanical science, or natural science award.

Community Service Award

Service to the community is a fundamental principle of 4-H because involvement in service helps shape lifelong values. Clubs are eligible to receive this award.

- One Small Club
- One Large Club

4-H Volunteer Recognition

Any individual involved with Fond du Lac County 4-H may nominate an adult, business, or group who has provided continued support to the county 4-H Program for special recognition. Awards are presented at the annual 4-H Leader Banquet in the fall.

4-H Alumni Award

This is to recognize an individual who, at one time, was a 4-H member and currently shows much support for the 4-H program.

Friend of 4-H

This is to recognize an individual, business, or group from the community that has shown much support for the 4-H Program in a variety of ways.

Meritorious Leader

This is to recognize an individual who was never a 4-H member and currently shows much concern and responsibility as a 4-H Leader.

4-H Educational Programs

American Spirit Opportunity

Youth learn about the steps to independence and freedom on a journey through their American Heritage. Visit sites of historical importance in Philadelphia, Boston, NYC and Niagara Falls.

Citizenship-Washington Focus

A week long citizenship and educational experience held at the National 4-H Center, Washington, D.C. Experience the city of Washington D.C. and see all the sites while learning about America's heritage, government, and learning civic responsibilities. There is no limit to the number of youth that can attend from Fond du Lac County. Sign-up is done through 4HOnline.

Fall Forum

Fall Forum is an opportunity each fall for 4-H youth in grades 7-13 and 4-H adult leaders to attend the statewide training weekend with county and state staff. The forum provides an educational opportunity for youth and adult volunteers to develop partnerships, facilitate discussions between counties, and provide an opportunity for youth and adult volunteers to get involved with planning and evaluating statewide 4-H programs.

International Programs

Outbound and Inbound opportunities available. Older 4-H youth have the opportunity to travel internationally with Wisconsin 4-H International Programs. This program emphasizes the 4-H values of belonging and understanding through international exchange. In today's ever changing world the skill of global citizenship becomes more and more important all the time. Help the youth in your community build bridges and connect with others from around the world!

New Horizons

This seven-day travel experience emphasizes community service learning, leadership development, and understanding others from a different part of the country. Location and dates are determined by the participants. 4-H members in grades 8-12 may apply. A minimum of six youth and a maximum of 18 youth are selected from FdL Co. Cost is determined by the location selected.

National 4-H Congress

National 4-H Congress is the flagship event of the 4-H program. For over 90 years, youth from the United States and its territories have participated in this youth leadership development conference. The Congress provides youth with a quality educational and cross-cultural experience that exceeds what any state independently provides. It is designed to address the needs and issues of youth while helping to develop capable, competent, and caring citizens. There is no limit to the number of youth that can attend from Fond du Lac County. Sign up is done through 4HOnline.

Space Camp

4-H members in grades 6-8, may apply for this fun-filled spring weekend at the U.S. Space and Rocket Center in Huntsville, Alabama. Participants will complete a simulated Space Shuttle mission, experience training simulators, tour the U.S. Space & Rocket Center and learn about becoming an astronaut. There is no limit to the number of youth that can attend from Fond du Lac County. Sign-up is done through 4HOnline.

Winter Leadership Camp

Older youth from throughout the Eastern Region of Wisconsin come together each winter at a 4-H Winter Leadership camp to work on improving their leadership skills through hands-on, interactive leadership sessions. Youth will gain a better understanding of what it means to be a leader and how to apply being a youth leader in their club, county, and school.

WI 4-H Youth Conference

A four-day 4-H conference held each June on the UW-Madison campus for members in grades 7-10. Youth participate in a variety of workshops and tours in the Madison area. Fond du Lac County selects up to 12 members to **receive partial funding** to attend the conference. There is no limit to the number of youth that can attend from Fond du Lac County. Sign-up is done through 4HOnline.

Scholarships

Fond du Lac County 4-H annually awards scholarships for youth participating in educational travel opportunities. Typically, youth that are awarded scholarships pay 50% of the participant registration fee. Youth that are awarded scholarships will be responsible for sharing their experience, writing thank you notes to sponsors, and taking on a new leadership responsibility.

Fond du Lac County 4-H also awards higher education scholarships to Fond du Lac County 4-H members. Applications are due in May. Youth who are selected to receive scholarships are recognized at the annual 4-H Graduation and Recognition Ceremony at the Fond du Lac County Fair in July. For more information on higher education scholarships visit: <https://fonddulac.extension.wisc.edu/4h/awards-scholarships/>.



Who's Who In 4-H

4-H Members

Members may enroll as young as kindergarten, but they must be at least 5 years old by October 1, 2020. It is recommended that young members take one project and that older members have a maximum of five projects. 4-H members in grades kindergarten to second (considered Cloverbuds) may only enroll in the Cloverbud project. Youth may re-enroll in 4-H up to one year after graduation from high school and not to extend beyond the age of 19 as of December 31 of the year of enrollment.

Adult Leaders

All adults wishing to enroll or re-enroll as a registered volunteer must enroll annually. New leaders must attend a one-time two-hour training. Trainings are generally offered November, February, and June. Enrolled volunteers are expected to actively participate in a leadership role. Re-enrolling adults should complete their application by Dec. 1.

Leader Types

In 4-H there are many ways to volunteer. All volunteers work with youth and adult volunteers in offering a positive youth development experience for young people. Check out specific volunteer opportunities below.

Activity/Event Volunteer

Provide leadership/organization for an activity or event and/or participate as a committee member

Program Volunteer - Adult Advisor/Chaperone

Work with a team of adult advisors and PYD staff to ensure youth have a safe and positive educational experience.

Club Enrollment Coordinator

Provide leadership for members and adult volunteers who are enrolling in the club or group organization

Club Volunteer

Provide leadership to the club or group organization

Committee Volunteer

Provide leadership for a committee and/or participate as a member of a committee, creating educational experiences for all youth engaged in the program

Project Volunteer

Provide leadership and organization to the project group who is learning about a specific topic.

Additional information for those who want to be an Adult Advisor/Chaperone:

- Adults interested in state level chaperone and coordination responsibilities must complete an Adult Advisor Application. State level experiences may include: Citizenship Washington Focus, Space Camp, or National 4-H Congress.
- Chaperones – for 4-H youth development experiences must have completed the Youth Protection Process; be enrolled 4-H volunteer leaders and must be over 21 years of age (for some experiences adults must be over 25).

Age, Birthdate, Year & Grade

These numbers are for the upcoming 4-H year 2020--2021.

Deadlines

Re-enrolling members must enroll by October 31, 2020 and new members by January 31, 2021 in order to exhibit and be eligible to receive a premium at the 2021 Fond du Lac County Fair. Youth may enroll after these dates and would be able to participate in other club and county 4-H activities.

Youth Leadership

If you plan on being a youth leader for a project, you need to add that youth leadership project to enrollment form. Youth leaders should also sign up for the Youth Leadership Project.

Making Changes After You Are Enrolled

To drop a project, you must contact the Extension Office in writing by the first Friday in April. Projects **may not** be added after your respective enrollment deadline.

Helpful Project Explanations

Art- Although there are many arts & crafts projects, when doing your record book you should put all art related projects onto one MPE form.

The Tractors Project does **not** enroll you in the tractor certification class that is needed to operate a tractor on a Wis. roadway. Information and registration for tractor certification will be found in the 4-H newsletter.

You need to be in at least 3rd grade to enroll in animal projects.



4-H Terms

4-H Grade

Some events require grade limits. In that case, grade is determined as of the current year, which begins on October 1.

4-H Membership

Youth in kindergarten through high school are eligible to join 4-H. Individuals have an option to extend membership one year beyond high school graduation.

4-H Year

A new 4-H year starts October 1 and ends September 30 of the following year.

Activity

4-H activities are short-term educational and/or social experiences that all 4-H members may participate in.

Family Times/4-H Friday

The Fond du Lac County 4-H newsletter is emailed to every 4-H family. The Family times/ 4-H Friday gives information about county and state level 4-H activities, trainings, and general updates. They are also posted on the Fond du Lac County Extension website!

Club Guidelines/By-Laws

All 4-H Clubs have a set of written guidelines/rules for the operation of the club. Be sure you become familiar with your club's guidelines early in the year.

Cover Letter and Resumes

The cover letter and resume is a summary of your 4-H accomplishments. 4-H members in 7th-13th grades can submit these materials to apply for funding from the 4-H Leaders Association for educational travel experiences.

Enrollment/Re-enrollment

You must complete registration via [4-HOnline](#) to enroll in a 4-H club and projects.

Exploring Project

Suggested for 3rd to 4th grade youth. Youth may enroll in Exploring for two years.

Fair Entry/Fair Premium Book

The Fair Premium Book, which can be found on the Fair website: <https://www.fonddulacountyfair.com/p/exhibitor-information> contains the listing of departments and classes in which youth can exhibit at the Fond du Lac County Fair. Youth need to be enrolled in the project to enter an exhibit in the corresponding class. All entries must be submitted online in June through the Fond du Lac County Fair website.

Leader

A youth or adult who has taken on the responsibility for conducting club, project, or county meetings or programs.

Project

An area of interest youth select to explore throughout the year. It is a series of hands-on long term learning opportunities.

Project Discs

Project Discs are awarded to 4-H youth at the county level based on their accomplishments in their projects and activities. Record Books are used to select the award winners. The recipients of county awards are announced at the Achievement and Recognition Program held in the fall.

Project Literature

High-quality, research-based literature is provided in many project areas. It's a valuable resource to guide youth through their hands-on project learning experiences and provides teaching resources for youth and adult volunteer leaders. A reliable source for project literature is the [Extension Learning Store](#) or the [4-H Mall](#). We do have some literature left at the Extension Office.

Record Book

A white/green binder/book in which a youth documents their 4-H experience for the year including setting project goals, recording accomplishments and participation in activities, and reflecting on their experience that year. The record book can be submitted at the club and county level for review and recognition of the youth's work.

Extension

Extension Fond du Lac County is responsible for the administration of the following programs: Positive Youth Development, Human Development and Relationships, Health & Well-Being, Community Development, Natural Resources, and Agriculture.

Volunteer in Preparation (VIP) Training

A training that adults are required to attend before becoming 4-H leaders.

Fond du Lac County 4-H Policy on Membership

1. Youth wishing to join Fond du Lac County 4-H must be enrolled in kindergarten (and be at least five years old by October 1, 2020) through one year after high school graduation and not to extend beyond the age of 19 as of December 31 of the enrollment year. Youth in grades K-2 enroll in the Cloverbud project.
2. Re-enrollment period is until October 31. New member enrollments will be accepted until Jan. 31, 2020. Members not enrolled by the appropriate date will not be eligible to receive a premium at the 2020 Fond du Lac County Fair. However, they will be able to participate in other club and county events. **Memberships will be accepted all year long.**
3. Dropping a project must be done in writing by the first Friday in April. Projects may not be added after the enrollment deadline.
4. Policy on re-enrollment of non-achievement members is left to the local club.
5. It is recommended that younger members take one project only, and a maximum of five projects be taken by older members.
6. A member should satisfactorily complete all projects carried in order to be an achievement member. (See Fond du Lac County 4-H Achievement Policy)
7. Members qualify for full graduation honors upon completion of high school, though they have the option to remain in 4-H one year past high school graduation.
8. A member is to enroll in one 4-H club during the enrollment year.

Fond du Lac County 4-H Achievement Policy

Fond du Lac County 4-H strives to provide a positive experience to the youth members who join. "Achievement" within the program plays a fundamental role in order for young people to obtain the most beneficial 4-H experience.

Youth members must enroll in at least one 4-H project.

Youth members are expected to complete all 4-H projects enrolled in for the year. Youth members should be aware of the county deadline for dropping projects.

Re-enrolling members must achieve in all projects the previous 4-H year. Members who do not achieve in the previous year may have their membership role limited the next year.

Youth members must publicly exhibit (such as Alto Fair, Fond du Lac County Fair, etc.) at least one exhibit in every project enrolled in. Legitimate reasons for not exhibiting at a fair event should be corresponded with your club's General Leader so that alternate accommodations may occur - examples include club or project meetings.

Youth members may complete and submit a Record Book to their 4-H club. This Record Book should be completed to the best of the member's ability, with proper forms completed for each project enrolled in.

Cloverbuds (members in grades K - 2) can complete a Cloverbud scrapbook. Turn the book into the club general leader, who will provide feedback. Cloverbuds are not eligible for any county awards.

Youth members should fulfill attendance requirements as established at the club level. Every effort should be made to be an active member of the club in order to be considered for county and state level events. If active membership is a hardship, you are encouraged to communicate with club leaders.

Upon the first year of achievement, the member (including Cloverbuds) will receive a nameplate and disc. In following years, a disc is earned for each year of achievement.

Wisconsin 4-H Youth Development Policies

Policies established by Wisconsin 4-H are available at <https://4h.extension.wisc.edu/resources/wisconsin-4-h-policies/> or by contacting Extension Fond du Lac County.

What is the Discretionary Fund?

The budget of the Fond du Lac County 4-H Leaders Association includes a discretionary fund. The purpose is to aid members who may have limited financial resources to participate in 4-H programs. If you need to access funds, please contact Tracy Keifenheim, 4-H Program Coordinator, at the Extension Office by calling 920-929-3170.



Introduction to 4-H

When you join 4-H, you will select one of the many clubs in the county to belong to.

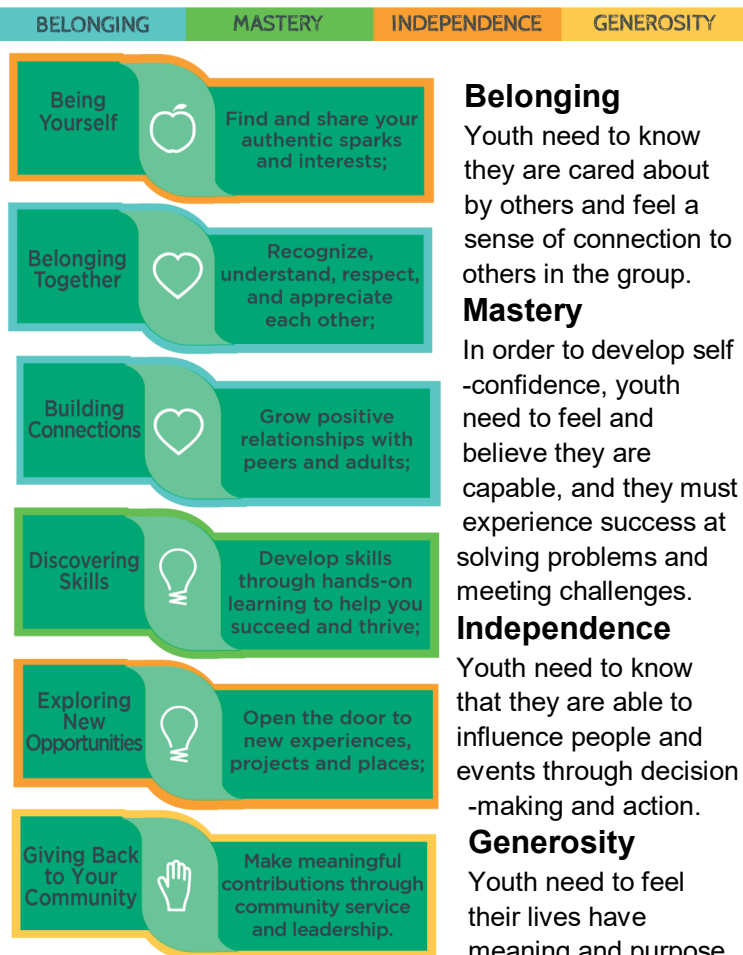
A club must have:

- Five or more youth from at least three families
- Adult leadership that has been approved through the Volunteer In Preparation process
- Educational plan which meets the purposes of the 4-H program
- Youth involvement in leadership and decision-making
- Meetings on a continuing basis
- Written operating guidelines, bylaws or constitution approved by members to govern the club
- Open enrollment to any youth eligible for 4-H membership, regardless of race, color, creed, religion, sex, national origin, disability, ancestry, sexual orientation, pregnancy, and marital or parental status

Wisconsin 4-H Movement

The 4-H movement is committed to providing youth development opportunities and promoting experience. positive change for young people. Together we can make the best, better.

In Wisconsin 4-H we value:



Belonging

Youth need to know they are cared about by others and feel a sense of connection to others in the group.

Mastery

In order to develop self-confidence, youth need to feel and believe they are capable, and they must experience success at solving problems and meeting challenges.

Independence

Youth need to know that they are able to influence people and events through decision-making and action.

Generosity

Youth need to feel their lives have meaning and purpose.

Project vs. Exhibit

A 4-H project is an area of interest that you want to learn more about during the year. The project is where learning-by-doing takes place. Within the project, you will find things to learn, to do, to make, and to explore.

Project vs. Exhibit...Many people in 4-H tend to use the words Project and Exhibit interchangeably. However, they are two VERY different things.

A 4-H **project** is an area that you want to learn more about during the year. There are projects on just about any topic you would like to explore, from art to woodworking, from computers to rabbits, from clothing to small engines, from aerospace to horses. If you are interested in learning more about something, there is probably a 4-H project to help you!

An **exhibit** is an item that you have made during your 4-H project learning that you take to the county fair. You will receive feedback from a judge on your exhibit.

When you are enrolling in 4-H, you are enrolling in a project, NOT selecting your fair exhibit.

This is your project guide . . . Don't forget to check out the project pages on the Wisconsin 4-H Web Site at: <https://4h.extension.wisc.edu/opportunities/projects/>. On these pages, you'll find descriptions for statewide projects, internet resources and links of interest, county fair exhibit suggestions, state specialist contacts, and other suggested 4-H resources.

And remember, you'll learn more than "subject matter" as you complete your projects. You'll learn many "life" skills that you'll use every day of your life, such as, understanding yourself, communicating better, solving problems, making decisions, and working with others. Good luck in your project selections. Have a great 4-H year!



Enrollment Guide Key:

LDR: Adult volunteers who help members learn about and execute project activities.

YTH LDR: 4-H members who have knowledge about a project and want to help others learn about that project.

PRJ: Available to any 4-H Member interested in enrolling in that specific project.

Follow the URL under the project heading for more relevant project information.

YOUNGER MEMBERS

<https://4h.extension.wisc.edu/opportunities/projects/cloverbuds/>

CLOVERBUD (LDR, YTH LDR, PRJ)

- Learn about 4-H clubs, activities, and events
- Explore your community
- Learn about working together as a club or team
- Share with others what you have learned
- Learn about 4-H project areas
- Learn to complete projects as an individual

EXPLORING (LDR , PRJ)

- Learn about the 4-H program
- Sample a variety of projects offered in 4-H
- Learn about yourself and others

COMMUNITY INVOLVEMENT

<https://4h.extension.wisc.edu/opportunities/projects/community-involvement/civic-engagement-project/>

AMBASSADORS

YOUTH LEADERSHIP (LDR , PRJ)

- Practice effective communication skills
- Set and achieve goals and resolve conflict
- Explore how leaders are different
- Develop a multi-media presentation
- Assess your own strengths and weaknesses
- Write vision and mission statements
- Contribute to a group project

CITIZENSHIP (LDR, YTH LDR, PRJ)

- Discover and discuss public issues
- Plan a project that will create, change or improve your community

HISTORY & HERITAGE

INTERNATIONAL PROGRAMS (LDR, YTH LDR, PRJ)

- Explore the world around you with maps
- Track weather in various parts of the world
- Make your family tree by talking with relatives
- Explore where your ancestors came from

SELF-DETERMINED (LDR, YTH LDR, PRJ)

- Create your own project or expand on an old one
- Select a project, develop a plan, identify resources
- Carry out and evaluate your plan



SERVICE LEARNING (LDR, YTH LDR, PRJ)

- Learn to give back to your community
- Reflect on your experiences
- Identify community needs
- Plan and implement your own service project
- Conduct an evaluation of your project

ANIMAL SCIENCES

<https://4h.extension.wisc.edu/opportunities/projects/small-animals/>

BEEF (LDR, YTH LDR, PRJ)

- Identify various beef breeds and parts of a beef animal
- Fit and judge beef cattle
- Halter-break a calf and show a calf
- Recognize and raise a healthy animal
- Present oral reasons during judging
- Learn about feed ingredients, behavior, and parasites
- Learn beef carcass composition and retail meat cuts
- Learn about careers, health, reproduction, etc.
- Discover how to market your animal and by-products

CATS (LDR, YTH LDR, PRJ)

- Identify cat breeds
- Name the parts of a cat; Handle and groom a cat
- Explore tricks to teach a cat
- Learn about feeding and emergency care
- Detect signs of illness and health issues
- Explore veterinary procedures
- Learn reproduction and cat body systems
- Learn showmanship and cat behavior

DAIRY (LDR, YTH LDR, PRJ)

- Identify dairy breeds and parts of the dairy cow
- Identify stages of calving and care
- Learn about housing and hay quality
- Learn about milking and food safety
- Observe animal behavior
- Practice mastitis detections
- Practice pregnancy detection and delivery of a calf
- Explore various dairy industry careers

DAIRY MANAGEMENT (PRJ)

DOGS (LDR, YTH LDR, PRJ)

- Learn basic skills for dog care and training
- Discover different dog breeds and body parts
- Learn how to keep a dog healthy and groomed
- Explore dog health and nutrition
- Learn showmanship and training techniques
- Investigate responsible breeding
- Care for geriatric dogs
- Train service dogs

DAIRY GOAT (LDR, YTH LDR, PRJ)

- Select, manage, fit, and show goats
- Learn to keep your goat healthy
- Feed your goat for maximum production
- Prepare for kidding
- Develop judging skills
- Learn how to milk a goat properly
- Learn about genetics, diseases and breeding
- Gain leadership and explore career opportunities

MEAT GOAT (LDR, YTH LDR, PRJ)

- Identify meat goat breeds and parts
- Feed and care for a meat goat
- Learn about feeding and emergency care

- Detect signs of illness and health issues
- Explore veterinary procedures
- Learn reproduction and cat body systems
- Learn showmanship and cat behavior

PIGMY GOAT (LDR, YTH LDR, PRJ)

HORSE/HORSELESS HORSE (LDR, YTH LDR)

HORSES (PRJ)

- Learn horse behavior and terms
- Study breeds and identify body parts
- Saddle, groom and bridle your horse
- Understand horse selection and training
- Learn about tack, feeding and diseases
- Practice showing a horse and trail riding
- Explore horse breeding, genetics and heredity
- Understand horse diseases and prevention
- Learn about fencing, pasturing and housing
- Practice a round-pen workout
- Learn English and Western style bridles
- Understand equitation and riding styles
- Present your horse in showmanship classes

HORSELESS HORSE (PRJ)

You do not need a horse in this project

- Explore horse behavior, terms and breeds
- Identify body parts
- Learn grooming, saddling and bridling
- Explore judging and oral reasons
- Learn selection, training and showing
- Practice trail riding skills
- Explore horse breeding, genetics and heredity
- Understand horse diseases and prevention
- Learn about fencing, pasturing and housing
- Explore horse-related careers

MODEL HORSE (LDR, YTH LDR, PRJ)



LLAMAS (LDR, YTH LDR, PRJ)

PETS (LDR, YTH LDR, PRJ)

- Select a pet and identify body parts
- Learn to provide a safe environment
- Explore animal digestion and feeding
- Determine the animal's sex and proper health
- Study pet behavior and communication
- Understand how genetics work
- Explore animal welfare issues

POULTRY (LDR, YTH LDR, PRJ)

- Identify poultry breeds
- Learn parts of the bird
- Learn parts and functions of the egg
- Discover how an egg is formed
- Prevent poultry diseases
- Handle poultry products safely
- Process a chicken

POULTRY WATERFOWL (PRJ)

- Learn about waterfowl breeds and parts
- Handle waterfowl properly
- Select and prepare waterfowl for market
- Incubate and exhibit waterfowl

POULTRY TURKEYS (PRJ)

- Learn about buying poultry
- Prepare a brooding area
- Raise range turkeys
- Feed and water turkeys
- Identify diseases

POULTRY BANTAMS (PRJ)

- Discover bantam breeds and breed characteristics
- Learn how to get started raising bantams
- Select and mate bantams
- Incubate and rear their young
- Learn to feed and house birds
- Fit and show bantams

POULTRY PIGEONS (PRJ)

- Learn about buying, banding and feeding
- Understand about proper housing and behavior
- Learn about grooming and exhibiting

RABBITS (LDR, YTH LDR, PRJ)

- Learn about selecting and handling rabbits

- Identify rabbit breeds and body parts
- Give oral reasons and judge rabbits
- Learn to tattoo and keep records of animals
- Learn about breeding and genetics
- Market rabbits
- Learn about disease prevention and rabbit registration

RABBIT HOPPING (LDR, YTH LDR, PRJ)

- How to choose a rabbit/breed
- History of rabbit hopping
- Learn how to make your own regulation jumps
- Learn Judging, Timer, Gate Keeper, and Score Keeper rules and guidelines

SHEEP (LDR, YTH LDR, PRJ)

- Identify sheep breeds and body parts
- Observe sheep behavior
- Identify uses of wool and other by-products
- Fit and show sheep
- Learn to identify sheep parasites
- Promote meat safety
- Diagnose sheep diseases
- Use medications safely
- Set sheep production goals
- Plan sheep related activities
- Market sheep products and teach others

SWINE (LDR, YTH LDR, PRJ)

- Identify swine breeds, feeds and animal parts
- Identify pork meat cuts
- Practice fitting and showing a hog
- Make a swine health care plan
- Identify diseases
- Learn to make breeding and culling decisions
- Judge a class of breeding gilts
- Design a preventative herd health plan

VETERINARY SCIENCE (LDR, YTH LDR, PRJ)

- Learn different breeds of animals and interpret behaviors
- Identify feed nutrients
- Describe animal life stages and systems
- Create health records for your animal
- Conduct food safety experiments
- Discover importance of immunity and bio-security
- Consider ethics and animal welfare
- Investigate the importance of genetics
- Understand diseases that spread from animals to humans
- Learn about diversity of veterinary careers

ARTS & COMMUNICATION

<https://4h.extension.wisc.edu/opportunities/projects/arts-communication/>

ARTS/CRAFTS (LDR, YTH LDR, PRJ)

- Learn art through cutting, pasting and drawing
- Explore sculpting and constructing with fibers
- Paint and print using different materials
- Explore art techniques, culture and history of art
- Learn artistic challenges in drawing, fiber arts and sculpting
- Develop graphic design techniques

BOOKS ON THE MOVE (LDR, YTH LDR, PRJ)

CERAMICS (LDR, YTH LDR, PRJ)

CLOWNING (LDR, YTH LDR, PRJ)

- Discover the history of clowning
- Develop your own character
- Design your own makeup, costume and props

COMMUNICATIONS (LDR, YTH LDR, PRJ)

- Engage in non-verbal, verbal and written activities
- Strengthen your personal communication skills
- Encrypt codes, write songs and give directions
- Learn to become a confident communicator
- Present oral reasons, plan and present speeches
- Practice making good first impressions
- Develop a public presence by speaking in public
- Explore communication careers
- Develop presentations

CREATIVE WRITING (PRJ)

- Explore language and creative expression
- Stimulate your creativity and self-expression
- Enrich your joy of book reading

DANCE (LDR, YTH LDR, PRJ)

DRAWING & PAINTING (LDR, YTH LDR, PRJ)

- Learn to draw with pencil, chalk, crayon, etc.
- Learn to blend and shade
- Make surface rubbings
- Paint with watercolor
- Paint with oil and acrylics
- Mix colors, mat and frame your artwork

FOLK ARTS (LDR, YTH LDR, PRJ)

- Explore traditional folk arts
- Learn more from your family and community
- Learn storytelling
- Decorate eggs and make baskets

LATINO CULTURAL ARTS (LDR, YTH LDR, PRJ)

- Understand the rich Latino culture by exploring traditional art
- Make Latino instruments, jewelry, weavings, murals, etc.
- Celebrate Latino holidays, sample foods and tell stories

LEATHERCRAFT (LDR, YTH LDR, PRJ)

- Learn about the characteristics and uses of leather
- Use tools and equipment
- Make patterns and original designs
- Explore various leathercraft techniques

MUSIC (LDR, YTH LDR, PRJ)

- Gain a greater appreciation for music
- Explore different ways to participate
- Listen, perform and compose various types of music
- Teach others and make instruments

PHOTOGRAPHY (LDR, YTH LDR, PRJ)

- Explore the camera and learn to use it properly
- Shoot photos that tell a story
- Learn about camera adjustments
- Learn about film speed, shutter speed and aperture
- Learn about wide-angle and telephoto lenses
- Explore the use of light meters and studio lighting
- Experiment with special effect photos

POSTERS (PRJ)

SCRAPBOOKING

SIGN LANGUAGE

SPEAKING (LDR, YTH LDR, PRJ)

- Plan, practice and present an effective speech
- Gain confidence in public speaking
- Plan, practice and present an effective demonstration

THEATRE ARTS (LDR, YTH LDR, PRJ)

- Study acting from sound, movement, voice and speech
- Learn different ways to play a scene
- Try pantomime, clowning and improvisation
- Investigate the history of puppets
- Explore types of puppets and puppet characters

Continued on Next Page ➤

- Use puppets in community service work
- Study costumes, makeup, stage sets, props and sound
- Learn stage management
- Create sounds and disguises

TIE DYING

VIDEOGRAPHY (PRJ)

- Learn storytelling, editing and lighting
- Experiment with camera handling and editing
- Learn to plan a project with the use of sound and titles
- Show and review your production

WOOD BURNING WEARABLE ART

FAMILY, HOME & HEALTH

<https://4h.extension.wisc.edu/opportunities/projects/family-home-health/>

CHILD DEVELOPMENT (LDR, YTH LDR, PRJ)

- Learn the development of babies and toddlers
- See what makes your family special
- Discover how to match toys to ages of children
- Develop family rules
- Check for safety hazards
- Explore how to be an effective parent
- Gain experience as a teacher or coach
- Make babysitting and first aid kits
- Check out child development careers

CLOTHING (LDR, YTH LDR, PRJ)

- Identify sewing tools and machine parts
- Thread a sewing machine, identify fabrics
- Select and purchase a pattern, sew and clip a seam
- Sort clothes for laundry, remove stains
- Identify types of fabric constructions
- Sew different buttonholes and seam finishes
- Use pressing tools and thread a serger
- Combine patterns to create a design
- Create outdoor wear, design and embellish a garment
- Use a computer to print on fabric

CONSUMER SAVVY (LDR, YTH LDR, PRJ)

- Learn your shopping style
- Know the difference between wants and needs
- Write a savings and spending plan

- Start a savings account
- Identify your personal spending values
- Understand advertising appeal and its affects
- See how peer pressure can influence your purchases
- Understand the risks of shopping on the Internet
- Define consumer responsibilities and ethics
- Understand the costs of owning a vehicle

CROCHETING (LDR, YTH LDR, PRJ)

- Learn to select and purchase yarn, thread and equipment
- Explore crocheting and finishing techniques
- Understand care instructions for crocheted items

ENTREPRENEURSHIP (LDR, YTH LDR, PRJ)

- Practice the skills needed to be an entrepreneur
- Explore businesses, products, marketing and pricing
- Create a business plan and start your own business

FOODS & NUTRITION (LDR, YTH LDR, PRJ)

- Explore why calcium is important to our bodies
- Understand TV commercial messages about food
- Learn to change recipes, reduce fat content in recipes
- Discover how to store fruit and vegetables
- Learn to evaluate nutrition information and fad diets
- Develop your own exercise program
- Learn how to cook different cuts of meat
- Learn to *divide* large quantity packages for family use
- Conduct a food activity with young children
- Learn to divide recipes and make substitutions
- Plan menus on a budget

FOODS PRESERVATION (LDR, YTH LDR, PRJ)

- Learn the basics of preserving food safely
- Use UW-Extension Safe Food Preservation Series

HEALTH (LDR, YTH LDR, PRJ)

- Learn how to respond to someone who is choking
- Assemble a first aid kit
- Identify your personal talent areas in health care
- Explore hygiene, nutrition and physical activities
- Design your own fitness plan
- Interview individuals in the health and fitness fields

HOME ENVIRONMENT (LDR, YTH LDR, PRJ)

- Make small home decorative items for the home
- Explore the world of home interior design

Continued on Next Page ➤

- Refinish wood furnishings and make other home items
- Learn the principles of home design
- Learn scale, balance and proportion in home design
- Create storage centers, restore furniture
- Create a welcoming environment outside your home
- Learn about purchasing furnishings for the home
- Restore or make a heritage item

INTERGENERATIONAL PROGRAMS (LDR, YTH LDR, PRJ)

- Learn to understand older people better
- Let them share their stories and experiences
- Explore what happens as you grow older

KNITTING (LDR, YTH LDR, PRJ)

- Discover what to consider when buying yarn or tools
- Learn knitting and finishing techniques
- Correct knitting errors
- Learn how to care for your knitted items

PERSONAL FINANCE (LDR, YTH LDR, PRJ)

- Learn money management skills
- Learn how to live on a budget
- Learn about wants and needs, values and goal setting
- Explore ways to use and save money
- Learn the benefits and drawbacks of credit
- Survey and select financial services

QUILTING (LDR, YTH LDR, PRJ)

WORKFORCE READINESS (LDR, YTH LDR, PRJ)

- Explore what it takes to get your first job
- Discover how to assess job possibilities in the community
- Create job scenarios
- Recognize your learning styles and personal qualities

MECHANICAL SCIENCES & STEM

<https://4h.extension.wisc.edu/opportunities/projects/stem/>

AEROSPACE (LDR, YTH LDR, PRJ)

- Compare birds and airplanes
- Make a space helmet
- Identify types of aircraft
- Discover how weather affects flying
- Build and fly a kite
- Make a hot-air balloon model

- Build, exhibit, and launch model rockets
- Make a flight simulator, demonstrate why rockets fly
- Build an altitude tracker, plan a flight route
- Discover the effects of gravity

BICYCLES ENG & TECH (LDR, YTH LDR)

- Explore the basics toward lifelong cycling
- Learn safety, road rules, and planning for a pleasant ride
- Choose a bike that's right for you
- Practice bike maintenance
- Learn road rules

COMPUTERS (LDR, YTH LDR, PRJ)

- Learn about hardware, software and various applications
- Visit the project's interactive website
- Build and repair a computer
- Learn to upgrade and create connections
- Install operating systems
- Discover how to create and manage networks
- Make decisions about network management
- Explore security issues and troubleshooting

ELECTRICITY (LDR, YTH LDR, PRJ)

- Identify electrical materials
- Build a compass, flashlight, switch and electric motor
- Learn to read circuit diagrams
- Build a circuit and measure voltages
- Understand the symbols on wires and cables
- Identify electrical and electronic parts and devices
- Learn how to solder and prepare parts for assembly
- Assemble a circuit using a transistor

GEOSPATIAL (LDR, YTH LDR, PRJ)

- Discover ways of thinking about geographic positions
- Learn about navigational tools: GIS, GPS, compasses
- Learn to measure distances
- Combine data with geographical positions
- Use multi-layered maps to attempt to solve problems
- Find ways to reduce traffic congestion
- Pinpoint pollution sources
- Discover ways of boosting tourism through mapping

**GEOCACHING
LEGOS
MECHANICAL SCIENCES
MODEL CARS
MODEL RAILROAD
MODEL ROCKETRY**

ROBOTICS (LDR, YTH LDR, PRJ)

- Learn about robot form, function and design
- Build robots from everyday items
- Explore and learn about robots that move with legs, wheels and underwater.
- Learn about basic electrical power and motors, and gear system
- Build robots from everyday items
- Explore and learn about robots sensors and analog and digital systems
- Study basic elements of programming and instruction

SCALE MODELS (LDR, YTH LDR, PRJ)

- Assemble and create scale models of trains, cars, etc.
- Learn how to obtain materials you need in construction
- Learn to display your model and judge it.

SMALL ENGINES (LDR, YTH LDR, PRJ)

- Explore external engine parts and tools
- Identify the uses of small engines and safety issues
- Explore the internal parts of engines
- Learn engine sizes, safety issues
- Tear down and rebuild an engine
- Learn to use diagnostic tools

TRACTORS (LDR, YTH LDR, PRJ)

- Learn and identify parts of the tractor, tractor maintenance
- Learn about different fuels and engine cooling systems
- Research different safety features and learn safety rules
- Understand the mechanics of engines
- Identify accessory equipment
- Learn the functions of different operational systems
- Learn types of oil systems and fuel safety
- Learn how to hook on a PTO unit
- Learn tractor and machinery maintenance

WELDING

WOODWORKING (LDR, YTH LDR, PRJ)

- Learn safety practices when working with wood and tools
- Identify types of nails and wood
- Sand and paint a piece of wood
- Select a project to build (birdhouse, foot stool)
- Compare different types of hinges
- Enlarge scale-drawn woodworking plans
- Compare different grades of plywood
- Learn to make more difficult joints

- Evaluate exotic and veneer woods
- Create inlays and overlays, test various adhesives



NATURAL SCIENCES

<https://4h.extension.wisc.edu/opportunities/projects/outdoor-education/>

ADVENTURES (LDR, YTH LDR, PRJ)

- Learn how to camp safely in all weather conditions
- Investigate camping equipment and clothing
- Build a campfire and cook a meal
- Practice tying knots and first aid
- Learn to use a map and compass

BEES

BIRDS

BICYCLING-ENVIRON ED

BACKPACKING & HIKING (LDR, YTH LDR, PRJ)

- Learn to organize and pack a backpack
- Select appropriate clothing, prepare a first aid kit
- Learn to use a compass
- Prepare for dangerous weather
- Plan a camping trip menu and prepare supplies
- Practice "Leave No Trace" principles while hiking
- Study various organism habitats
- Select group backpacking gear including a tent
- Design a non-tent backpacking shelter
- Learn to orient a map and use triangulation

BICYCLING – ENVIRON ED (PRJ)

- Learn how and where to bicycle safely
- Plan a bicycle camping trip
- Design and build a bicycle obstacle course
- Conduct a bike maintenance check

CAMPING

CANOEING (PRJ)

- Learn how and where to canoe safely
- Select and care for equipment
- Explore aquatic environments
- Canoe a river

CONSERVATION

ENTOMOLOGY (LDR, YTH LDR, PRJ)

- Learn about insects, their behavior and life history
- Discover the parts of an insect's body
- Learn how an insect protects itself
- Explore insect habitats
- Raise and study mealworms and mosquitoes
- Observe a colony of ants
- Make an insect identification key
- Record and collect aquatic insects
- Explore various gardens and habitats

EXPLORING YOUR ENVIRONMENT (LDR, YTH LDR, PRJ)

- Explore the four elements of life- sun, air, water & soil
- Connect to the environment through plants and animals
- Learn how the environment is affected by pollution
- Explore wildlife habitats and tracking
- Learn about groundwater
- Research pollination and how it works
- Explore the world of biotechnology
- Learn the features of insect creatures
- Begin to understand biodiversity
- Learn what climate has to do with the way we live

FISHING (LDR, YTH LDR, PRJ)

- Identify types of tackle and organize a tackle box
- Identify different types of bait and fish in your area
- Learn to take proper care of your catch
- Cast a spinning rod and reel
- Learn to tie fishing knots
- Select a recipe and cook a fish
- Collect and analyze aquatic life
- Learn to reassemble a fishing reel
- Make artificial flies and lures
- Modify fishing equipment

FORESTRY (LDR, YTH LDR, PRJ)

- Identify forest types, forest products and trees
- Age trees by counting rings

- Describe how leaves affect rainfall
- Learn how trees move water from soil to canopy
- Diagram a leaf, analyze fire risk
- Understand major forest changes and their impact
- Recognize different tree fruits
- Create a community forest map
- Identify forest biomes by continent
- Identify an unknown tree using a tree key

RECYCLING (LDR, YTH LDR, PRJ)

- Learn about the impact of solid waste on the environment
- Learn to reduce, reuse and recycle

SCIENCE DISCOVERY (LDR, YTH LDR, PRJ) TAXIDERMY

SHOOTING SPORTS (LDR, YTH LDR)

For more information see Shooting Sports webpage:
<https://4h.extension.wisc.edu/opportunities/projects/shooting-sports/>.

ARCHERY (LDR, YTH LDR, PRJ)

- Learn the fundamentals of archery marksmanship
- Learn rules and safety guidelines
- Make archery equipment
- Shoot with sights and different bows

AIR PISTOL (LDR, YTH LDR, PRJ)

- Explore different air pistols
- Learn basic safety rules and guidelines
- Learn marksmanship and shooting procedures

RIFLE (LDR, YTH LDR, PRJ)

- Explore rifle history and the different models
- Learn to sight-in your rifle and score targets
- Learn various shooting positions used in competition
- Learn safe handling procedures and range rules

Ages: Only 12 years old and above can shoot powder burning guns

HUNTING (LDR, YTH LDR, PRJ)

- Learn the history, philosophy and laws of hunting
- Learn to plan and equip yourself for a hunt

SHOTGUN (LDR, YTH LDR, PRJ)

- Learn the basic safety issues with shotgun handling
- Learn shooting fundamentals
- Learn the proper way to carry a shotgun

Ages: Only 12 years old and above can shoot powder burning guns

MUZZLELOADING (LDR, YTH LDR, PRJ)

- Learn about muzzleloading history
- Study different muzzleloading guns and accessories
- Learn how to clean a muzzleloader
- Learn safety issues

Ages: Only 12 years old and above can shoot powder burning guns

WATER (LDR, YTH LDR, PRJ)

- Identify water conservation and pollution issues
- Locate issues in your home, community or school
- Select an issue to focus on
- Develop and implement a plan

WEATHER WILDLIFE

WILDFLOWERS (PRJ)

- Learn about wildflowers in your neighborhood
- Learn to identify wildflowers and how to collect them
- Discover how humans affect wildflowers

PLANT & SOIL SCIENCES

<https://4h.extension.wisc.edu/opportunities/projects/plant-soil-science/>

CROPS (LDR, YTH LDR)

FLOWERS (LDR, YTH LDR, PRJ)

- Identify flower parts and their functions
- Plant flowers and make flower arrangements
- Learn about plant needs and soil testing
- Select and start new plants and grow transplants
- Examine plants for insects and diseases
- Make a landscape plan
- Write instructions on how to force bulbs
- Compare different fertilizers: organic and chemical

FRUITS (LDR, YTH LDR, PRJ)

- Produce fruits from apples to grape
- Select the best fruit cultivar for your home garden
- Produce fruits such as pears and grapes
- Learn about different varieties of cultivars

HOME GROUNDS (LDR, YTH LDR, PRJ)

- Learn about seeding and lawn care
- Learn lawn maintenance
- Explore fertilization and pest management techniques
- Learn the importance of planting new trees and shrubs

- Explore variety selection and appropriate placement
- Learn basic maintenance: pruning and fertilization
- Explore landscape planning
- Select, place and plant trees and shrubs

HORTICULTURE

HOUSE PLANTS (LDR, YTH LDR, PRJ)

- Identify plant parts and their functions
- Grow house plants, start a plant from a cutting
- Make a dish garden
- Learn about plant seeds and soil
- Select and start new plants and grow transplants
- Plant a terrarium
- Examine plants for insects and diseases
- Compare different fertilizers: organic and chemical

PLANT CRAFTS (LDR, YTH LDR, PRJ)

- Learn to harvest plants
- Use different drying techniques
- Learn how to use plant materials
- Learn how to make dried arrangements, corsages, etc.

VEGETABLES (LDR, YTH LDR, PRJ)

- Identify plant parts and their functions
- Explore germination and start a plant from a cutting
- Grow vegetables in containers
- Plan an outdoor garden
- Learn about plant needs and soil testing
- Build a compost pile, use mulches
- Grow plants in a cold frame
- Make a site analysis and landscape plan
- Compare organic and chemical fertilizers
- Research various insect control methods



Members & Families, please support and thank these contributors:

Friends of Fond du Lac County 4-H

Platinum (\$1,000 - \$2,499)

Fond du Lac County Farm Bureau

Gold (\$500 - \$999)

Badger Well Drilling, Inc., Mt. Calvary
Beck's Meat Processing, LLC, Oshkosh
Koffman Tool & Machining, LLC, Eden

Silver (\$250 - 499)

Mark & Karen Albert, Fond du Lac
(In memory of Norman Loehr)
Baker Cheese Factory, Inc., St. Cloud
FdL Credit Union, Fond du Lac
Hundertmark Seed, LLC, Fond du Lac
Milk Source, LLC, Kaukauna
Oakfield Elevator Company, Inc., Oakfield
Quality Roasting, Inc., Valders
Tom & Denise Retzleff, Fond du Lac
Rock River Seed & Chemical, Waupun
Winkel Farms, LLC, Waupun (Anonymous)

Bronze (\$100 - \$249)

Badger Soft Water, Inc., Fond du Lac
Central Ag Supply, Inc., Juneau
Compeer Financial, Fond du Lac
Country Visions Cooperative, Reedsville
Drexel Building Supply, Campbellsport
Dale & Laurel Huizenga, Waupun
Kartechner Brothers, LLC, Waupun
Nan Jean Kiesow, Brandon
King Farms Grain Company, Brownsville
Regina Koffman, Falls Church, VA
Ripon Electric, Inc., Ripon
Senland Farms, Campbellsport
Stan's Service Center, Oakfield
Webster's Marketplace, Ripon

Supporter of 4-H (Up to \$99)

Louis & Jenny Averbek, Fond du Lac
Dean & Lori Bauer, Brownsville
Lila Ebert, Lomira
Richard Goebel, Mt. Calvary
Gudex Living Trust, Campbellsport (Anonymous)
Jerry & Ann Kaiser, Fond du Lac
Love Lights for the Holidays, Shirley Simon,
Campbellsport
Al & Judi Messner, Oakfield
Marilyn O'Brien, Eden
Larry & Deb Pollack, Ripon
Cecilia Ries, North Fond du Lac
(In memory of Leona Engel)
Dale & Laurie Schraufnagel, Brownsville
Sharon Long & Peggy Schulte, Minneapolis, MN
(In memory of Alex Koffman)
Silica For Your Home, Fond du Lac
Stanley Schmitz, Inc., Chilton
(In honor of Stanley Schmitz)
Jesse & Carol Van Loo, Waupun
Mike & Melissa Vander Sanden, Fond du Lac
Widmer's Cheese Cellars
Dorothy Wilke, Campbellsport
Christine Zommers, Campbellsport
(In memory of Bertha Montag)

It's not too late to become a Friend of 4-H.
Send your gift to:
Friends of Fond du Lac County 4-H,
Room AE-227, 400 University Drive
Fond du Lac, WI 54935.

Make checks payable to:
Fond du Lac County 4-H Leaders Association

Your investment positively impacts young people.



Taking Care of Business: Contacting the Extension Office

Yes, we like to hear from you! Here are a few tips to help us communicate effectively:

Emailing

- Type “4-H” and the topic that you are communicating about in the subject line.

Calling

- Use the Extension phone numbers listed earlier in this guide, in our letterhead, in the newsletter, or found on the home page of our website.
- Talk with the office support staff. Pam or Tina can answer many 4-H questions, or can connect you with the best person to address your concerns.
- With caller ID being so common, you may have the direct number to an educator. Because we are often at meetings or programs, your question might be answered faster if you call the main office and speak with Pam.
- Support staff can tell you if someone is out of the office, so that you have a better sense of when to expect a reply.
- We have a voicemail service, so messages may be left in the evening, weekends, or when a particular staff member isn’t available.

In Person





- Schedule an appointment if you would like to talk to a specific person to ensure that our schedules work with your schedule.
- Extension Fond du Lac County is located at 400 University Drive, Room AE-227, Fond du Lac, WI 54935. It is located on the 2nd floor of the Administration/Extension Building on the UWO Fond du Lac Campus.
- Office hours are 8:00 a.m. to 4:30 p.m. Monday through Friday.
- If you are stopping by during office hours to turn in items or pick up items, please let staff know ahead of time so that we can gather materials for you.
- To drop off “mail-size” materials outside of office hours, place them in the drop box located outside of the Extension Office to the left of the office entrance door. The box is checked every business day.

Contacting the Extension Fond du Lac County Office for Supplies

The Extension Fond du Lac County is home to many programs that serve residents of Fond du Lac County, and 4-H shares some office equipment and supplies with other program areas. Please give us at least two business days’ notice if you need supplies, equipment, or photocopies. Even earlier is better yet! This allows us time to adequately prepare the materials you need without disrupting regularly scheduled programming.



The Wisconsin 4-H MOVEMENT

I pledge my  head to clearer thinking, my  heart to greater loyalty, my  hands to larger service, and my  health to better living, for my club, my community, my country and my world.

In Wisconsin 4-H we value:

Being Yourself



Find and share your authentic sparks and interests;

Belonging Together



Recognize, understand, respect, and appreciate each other;

Building Connections



Grow positive relationships with peers and adults;

Discovering Skills



Develop skills through hands-on learning to help you succeed and thrive;

Exploring New Opportunities



Open the door to new experiences, projects and places;

Giving Back to Your Community



Make meaningful contributions through community service and leadership.

BELONGING

MASTERY

INDEPENDENCE

GENEROSITY

To Make The Best Better.



UW-MADISON EXTENSION