

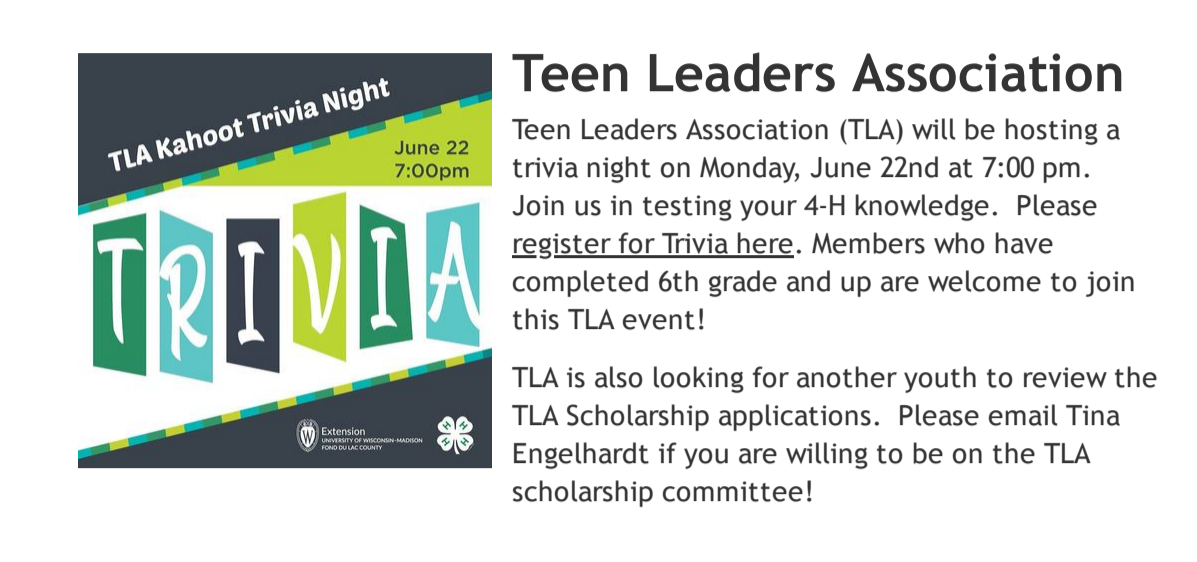
Have a newsletter contribution?

ALL CLUB and PROJECT LEADERS, MEMBERS, and PARENTS can contribute to the articles posted weekly by completing a short form and uploading their article and any photos to accompany it at <https://forms.gle/QBwvsCzhaHEffNw8>. SAVE THIS LINK! Articles for the current week must be submitted by midnight on Thursday. We would love to hear from you!

[Newsletter Form](#)

4-H Friday Project Ideas

Click on the pictures below for a DIY Birdfeeder, Waterbottle Rockets, or Meals in a Mug: Omelet Lessons!



Teen Leaders Association

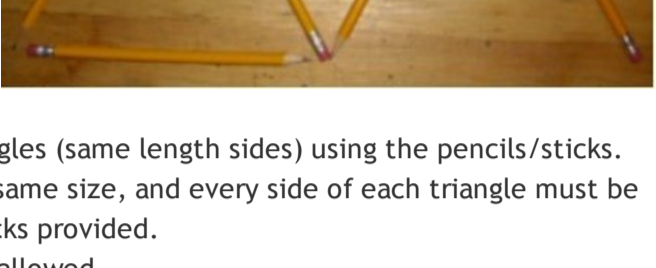
Teen Leaders Association (TLA) will be hosting a trivia night on Monday, June 22nd at 7:00 pm. Join us in testing your 4-H knowledge. Please register for Trivia [here](#). Members who have completed 6th grade and up are welcome to join this TLA event!

TLA is also looking for another youth to review the TLA Scholarship applications. Please email Tina Engelhardt if you are willing to be on the TLA scholarship committee!

Ron's Challenge

4 TRIANGLE CHALLENGE:
Equipment: Six pencils/pens of equal length.

- Arrange the pencils/sticks as in the picture.
- Now make four equilateral triangles (same length sides) using the pencils/sticks.
- Each triangle must be the same size, and every side of each triangle must be the same length as the sticks provided.
- No breaking sticks/pencils allowed
- Whaaaaat? It can be done in 3 moves! Crazy!



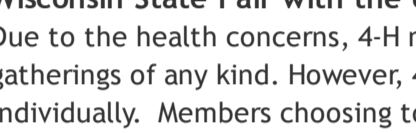
Completed in 3 Moves: Genius!
Completed in 4 Moves: Super Smart!
Completed in 5 Moves: You're Tough!
Completed in 6 Moves: You Don't Give Up!
Had to Ask for Help: That's Great! Use Your Resources!

Did You Solve It? Do You Need the Solution? Want More Challenges? Tell Me!

Send an email to the Extension Positive Youth Development Educator, Ron Jakubisin to ron_jakubisin@wisc.edu

Summer Virtual Exchange

Get to Know Youth From Across the U.S.
If you missed signing up and are still interested in the summer virtual exchange please contact Tracy Keifenheim at tracy.keifenheim@wisc.edu. 4-H youth who have completed sixth grade and up are eligible for this opportunity. The first virtual exchange will be with Tennessee Youth!



4-H and 2020 FDL Co. Fair Updates

4-H Involvement (4-H Members, Volunteers, Extension Staff)

Can a 4-H member participate as an exhibitor at a local county fair or the Wisconsin State Fair with the current Extension programming cancellations? Due to the health concerns, 4-H members are discouraged from participating in large gatherings of any kind. However, 4-H will not prevent young people from exhibiting individually. Members choosing to participate against 4-H advice will not be covered by 4-H liability insurance during their participation and 4-H assumes no responsibility should they become sick as a consequence of their participation.

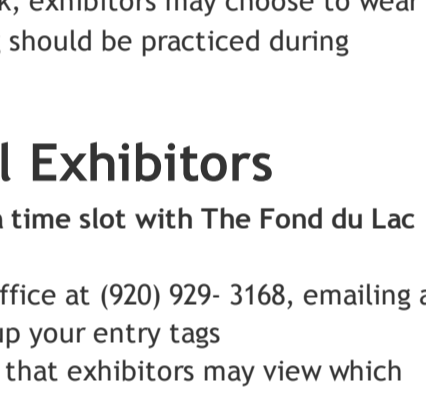
Can Extension Staff or 4-H Volunteers help in person at a county fair if Extension has canceled programs and activities? Due to the health concerns, 4-H volunteers are encouraged to avoid large gatherings of any kind and to attend only events that are following Extension guidelines, including distancing and face coverings. However, 4-H will not prevent people from volunteering individually. Volunteers choosing to participate on their own will not be covered by 4-H liability insurance during their participation and 4-H assumes no responsibility should they become sick as a consequence of their participation.

Staff members cannot attend fairs or other gatherings where the size exceeds the recommended guidance, in their official capacity.

Click here for more [WI 4-H County Fair Updates](#).

On Tuesday, June 9, the Fond du Lac County Fair Board voted unanimously to proceed with the fair in a modified capacity. Please see the [official statement](#).

Fond du Lac County Fair Exhibitor Information



- Junior and open class exhibitors will receive a wristband for non-judging events
- Junior and open class exhibitors will not need a "reserved ticket" in order to enter the fair and show
- The wristbands the junior and open class exhibitors will receive from their fees affiliated with their entries will replace a ticket, they can enter the "fair" part of the grounds with that wristband for each "session" from Thursday, July 16th thru Sunday, July 19th.

- Exhibitors will not be required to wear a mask; exhibitors may choose to wear a mask at their own comfort. Social distancing should be practiced during judging.

Information for Non-Animal Exhibitors

Junior exhibitors will be REQUIRED to sign up for a time slot with The Fond du Lac County Fair office to show their projects.
-You can sign up for a time slot by calling the Fair Office at (920) 929- 3168, emailing at office@fonddulacountyfair.com or when you pick up your entry tags
-A google sheet will be released for viewing only so that exhibitors may view which time slots are available

Judging will remain Face to Face
-Exhibitors will be highly encouraged to practice social distancing with the judge and other exhibitors that might be there at that time
-Exhibitors will not have a chair so we are not sharing surfaces
-Exhibitors will set the project on the table and step back to the designated "6 Feet Apart Mark" to get judged
-Anyone uncomfortable with face to face judging can call the Fair Office and set up a "Zoom" meeting call with the judge
-If any of the time slots do not work for you, call the Fair Office with that information, or you can drop off your projects with some notes about it to be judged
-Projects will be taken home right after judging because the building will not be open to the public this year to view projects
-We will be taking pictures of each project while they get judged to show recognition to the exhibitors on our Facebook and/or our website
-Any projects that get "starred" for the opportunity for state or merit recognition will have to be picked up within two weeks after judging

Open class will have the same drop off time on Wednesday, July 15th by 10 A.M.
-Open class may still watch the judging
-Open class exhibitors may also take their projects home immediately following judging

We will still have merit and state fair ribbons
Masks are encouraged but not required

Information for Animal Exhibitors

The information has been emailed out in a separate email regarding fair details. If you have not received an email please look in your spam or junk mailbox. If you still have not received the email please reach out. We are communicating the best we can, so please be patient.

Any other questions or clarifications call the Fair office at (920) 929- 3168 or office@fonddulacountyfair.com. Thank you for your understanding and cooperation in these tough and changing times.

[click here for online entries](#)

2020 Horse Expo & Gymkhana Cancellation

Dear Wisconsin 4-H horse project participants,

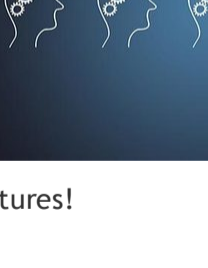
We are sorry to have to deliver this message to you. Wisconsin 4-H staff and the Wisconsin 4-H Horse Association have been working to plan for safety protocols and ways to hold this show this year and unfortunately, we deeply regret the need to cancel the 2020 4-H Horse Expo and Gymkhana events as we know it is yet another loss for our young people this year.

As decisions are made during this difficult time, the health and safety of our 4-H Youth, volunteers, and their families and community remains our primary concern. The Wisconsin 4-H Horse Expo is the state's largest horse show that draws almost 450-500 horses and over 1000 people in attendance. As public health Covid-19 restrictions and guidance are yet to be determined for September, it has become clear that events where more than 50-100 people gather will not be safe to occur and an event such as this requires a great deal of advance planning and financial investment. Out of respect for all of our youth participants who are making plans to train and practices, families that are making plans for qualifying shows, we cannot continue to hold out hope for our public health situation to improve. We continue to limit events to virtual or no-contact and to plan for the commencement of small group programs this summer and fall as our effort to protect those around us. We are all feeling the pain of these cancellations and look forward to moving forward together in the future to continue the positive impact and connections we make through our 4-H programs.

We will get through this together.

Sincerely,

WI 4-H Staff & WI 4-H Horse Association
Joe Muellenberg
Outreach Specialist
Wisconsin 4-H Program

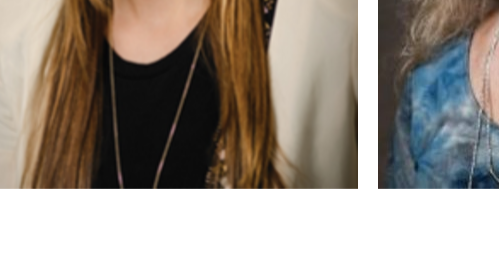


4-H Graduates of 2020

Members in grades 12 and 13 are eligible for 4-H graduation. Members in grade 12 have the option to stay in 4-H until one year after high school. For those of you who plan on graduating, please fill out this short graduation form. Please fill out the form, so your name is included in the graduation ceremony program, and also so you will receive your ribbon and certificate. If we don't hear from members in grade 12, it will be assumed you are planning on continuing in the 4-H Program for one more year.

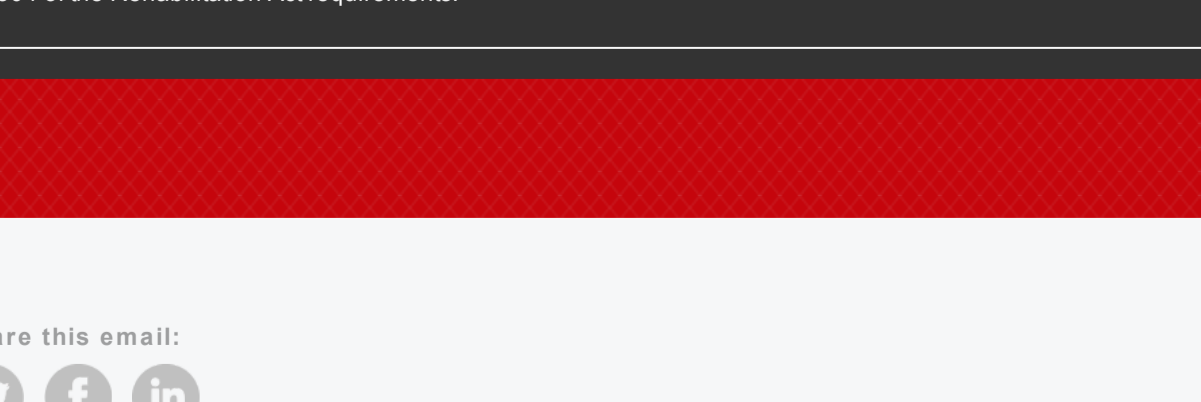
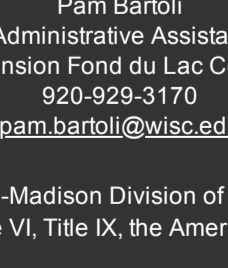
Please complete graduation surveys by, Friday, June 26th.

[4-H Graduation](#)



Idea Corner

Please feel free to share with me what your clubs are doing, and I will highlight them in the weekly emails to share with everyone as we want to continue to serve our community in this time of need! Please send highlights to Tracy at tracy.keifenheim@wisc.edu. Please include pictures!



Tracy Keifenheim
4-H Program Educator
UW-Madison Division of Extension
920-929-3177
tracy.keifenheim@wisc.edu

Pam Bartoli
Administrative Assistant
Extension Fond du Lac County
920-929-3170
pam.bartoli@wisc.edu

Tina Engelhardt
Administrative Assistant
Extension Fond du Lac County
920-929-3171
tina.engelhardt@wisc.edu

An EEO/AA employer, University of Wisconsin-Madison Division of Extension provides equal opportunities in employment and programming, including Title VI, Title IX, the Americans with Disabilities Act (ADA) and Section 504 of the Rehabilitation Act requirements.